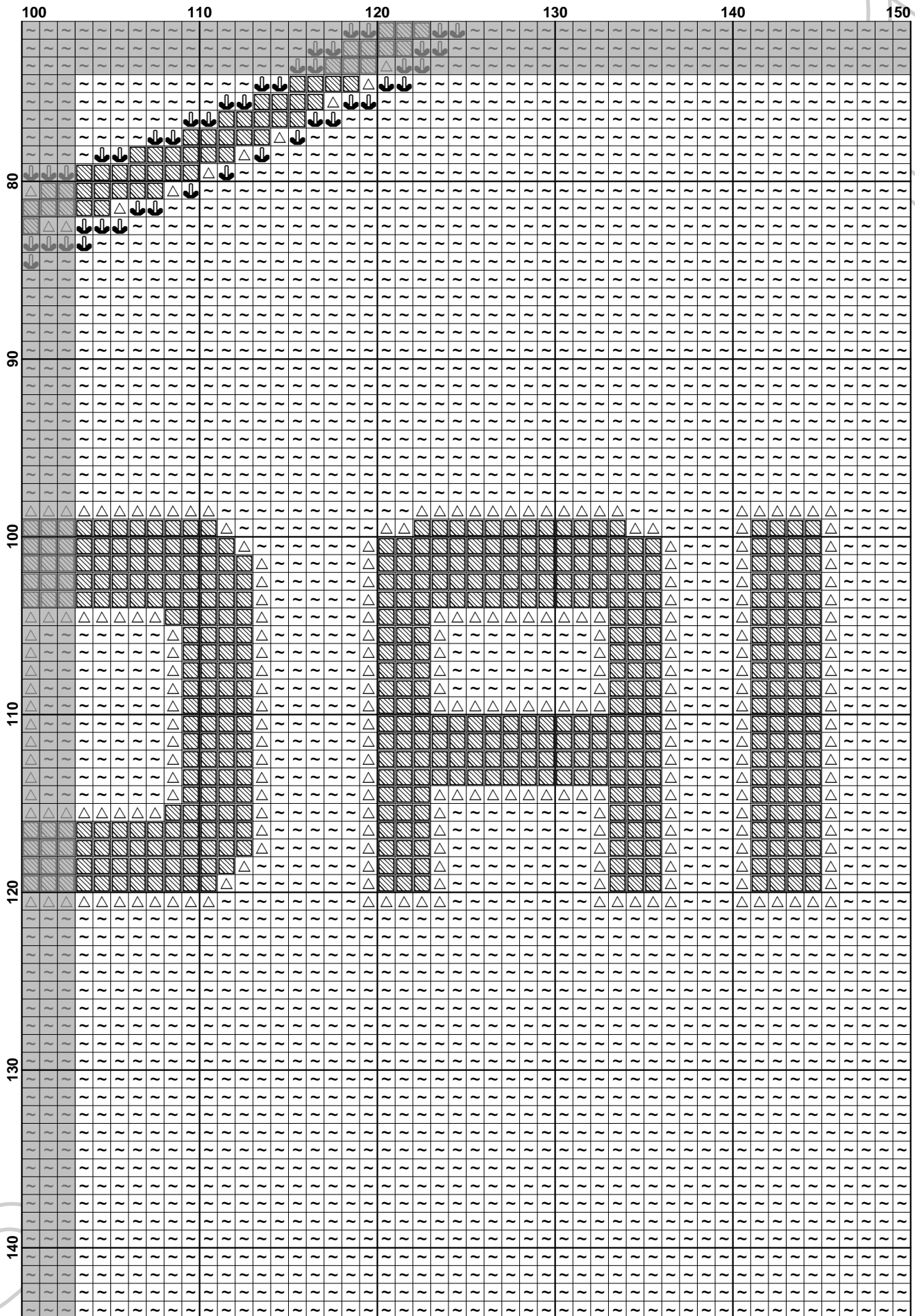










	50	60	70	80	90	100
80	~	~	~	~	~	~
90	~	~	~	~	~	~
100	~	~	~	~	~	~
110	~	~	~	~	~	~
120	~	~	~	~	~	~
130	~	~	~	~	~	~
140	~	~	~	~	~	~



Page 7 Hyundai

Fabric: Aida 14, White
150w X 144h Stitches
Size: 14 Count, 27.21w X 26.13h cm

Floss Used for Full Stitches:

Symbol	Strands	Type	Number	Color
 	2	DMC	311	Navy Blue-MD
 	2	DMC	318	Steel Gray-LT
 	2	DMC	415	Pearl Gray
 	2	DMC	White	White

Sendy2011

Usage Summary

Strands Per Skein: 6

Skein Length: 795.0 cm

Type	Number	Full	Half	Quarter	Petite	Back(cm)	Str(cm)	Spec(cm)	French	Bead	Skein Est.
■ DMC	311	2418	0	0	0	0.0	0.0	0.0	0	0	2.000
■ DMC	318	1551	0	0	0	0.0	0.0	0.0	0	0	1.000
■ DMC	415	1225	0	0	0	0.0	0.0	0.0	0	0	1.000
□ DMC	White	16406	0	0	0	0.0	0.0	0.0	0	0	7.000

Sendy2011