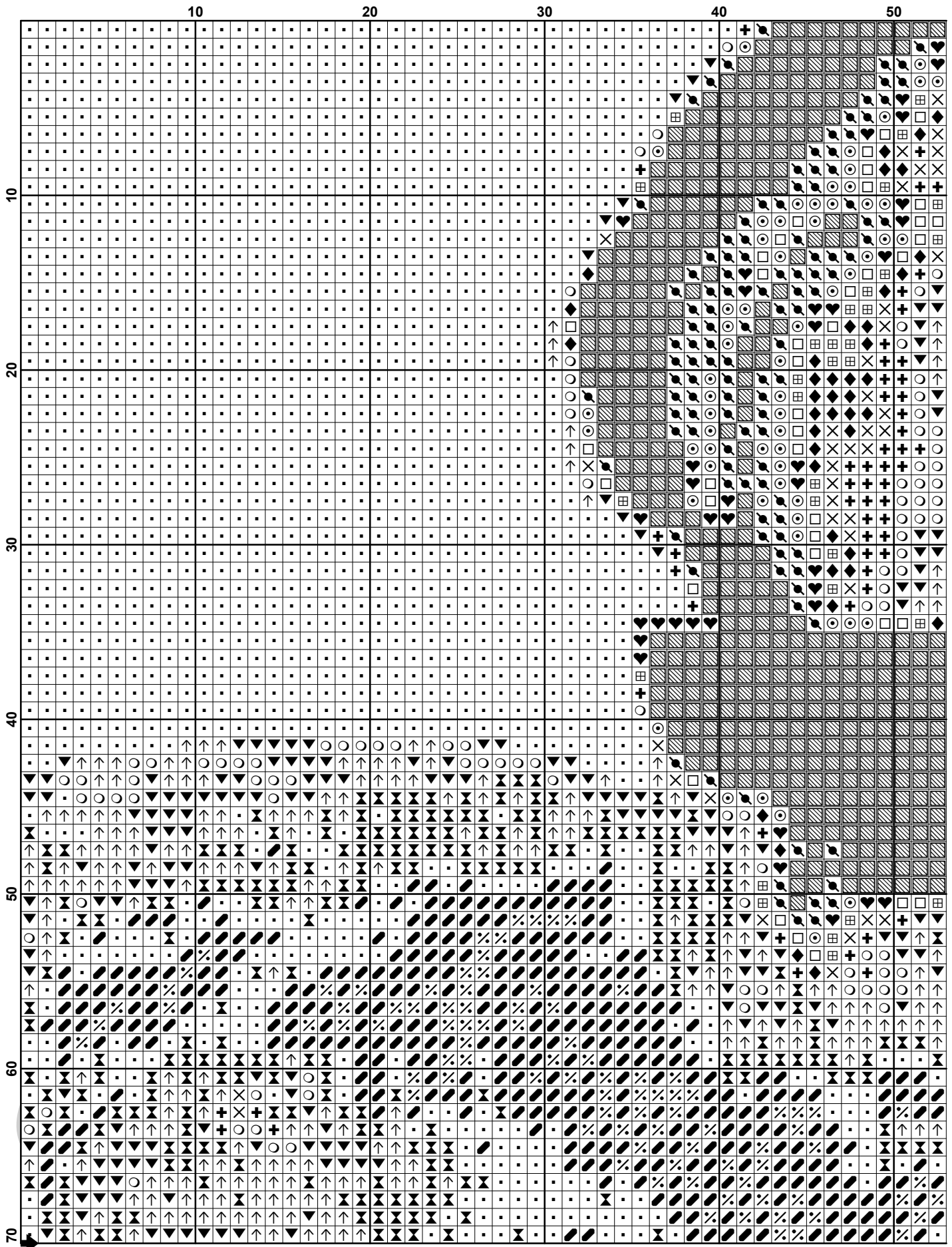


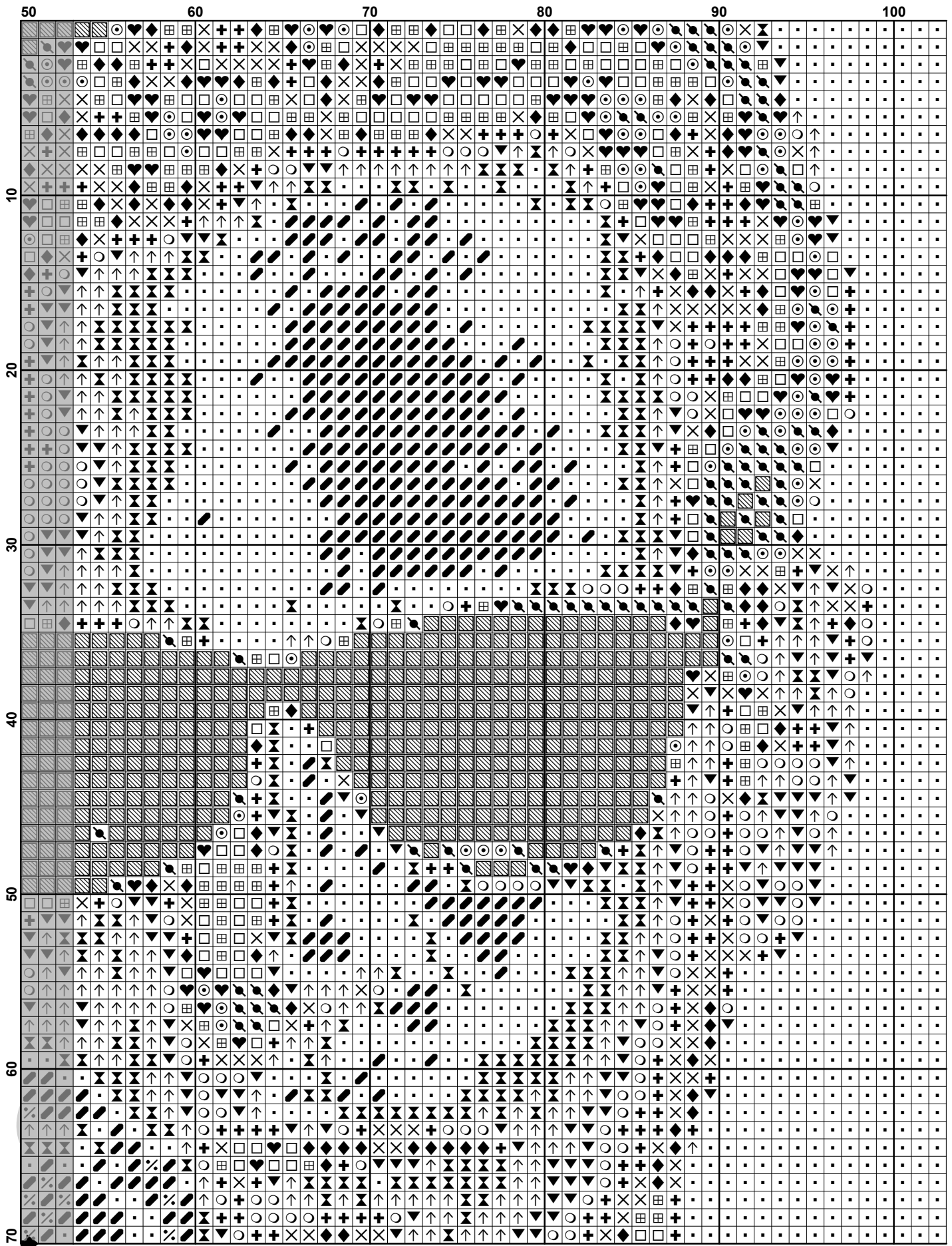
Rozmístění listů předlohy

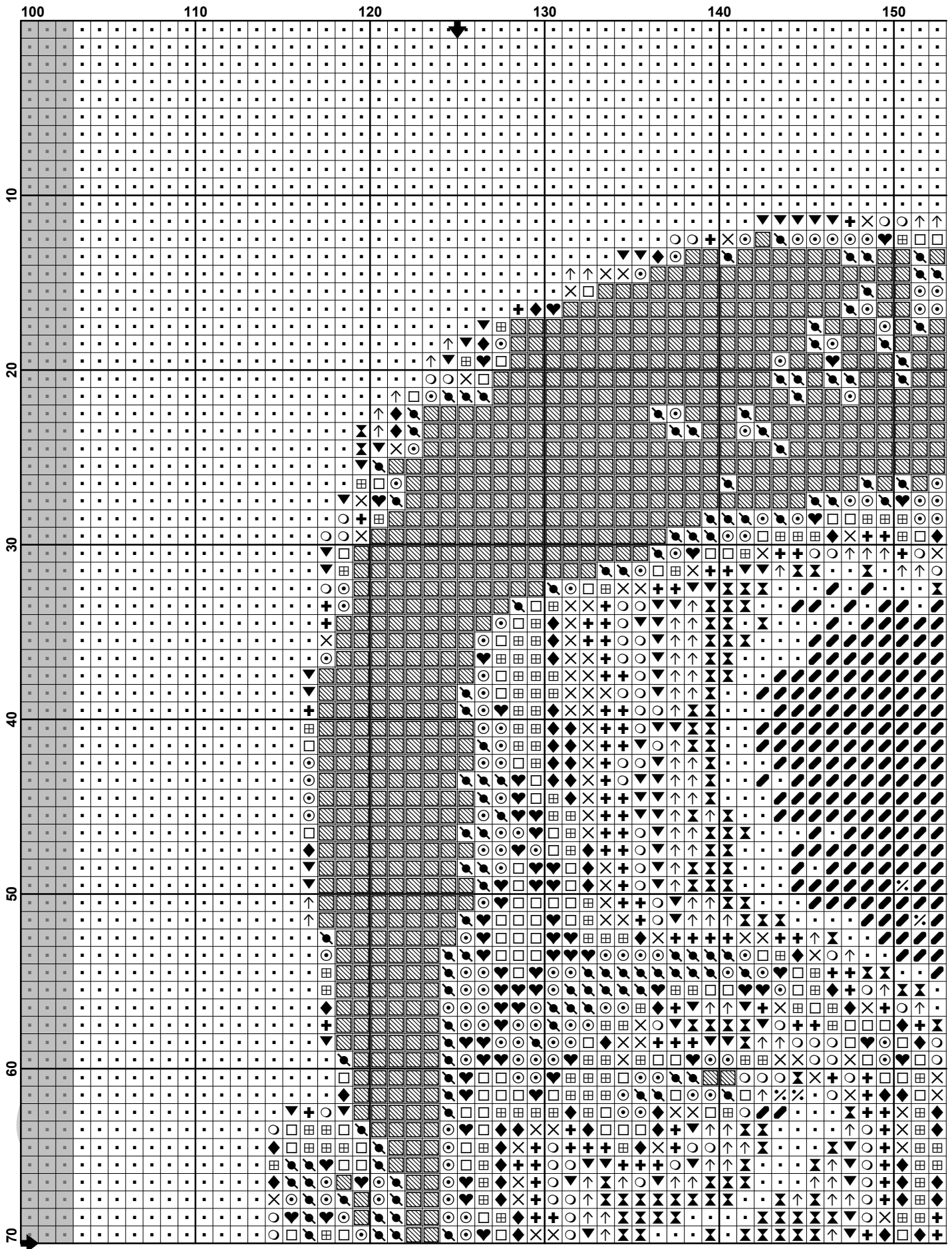
Depech.

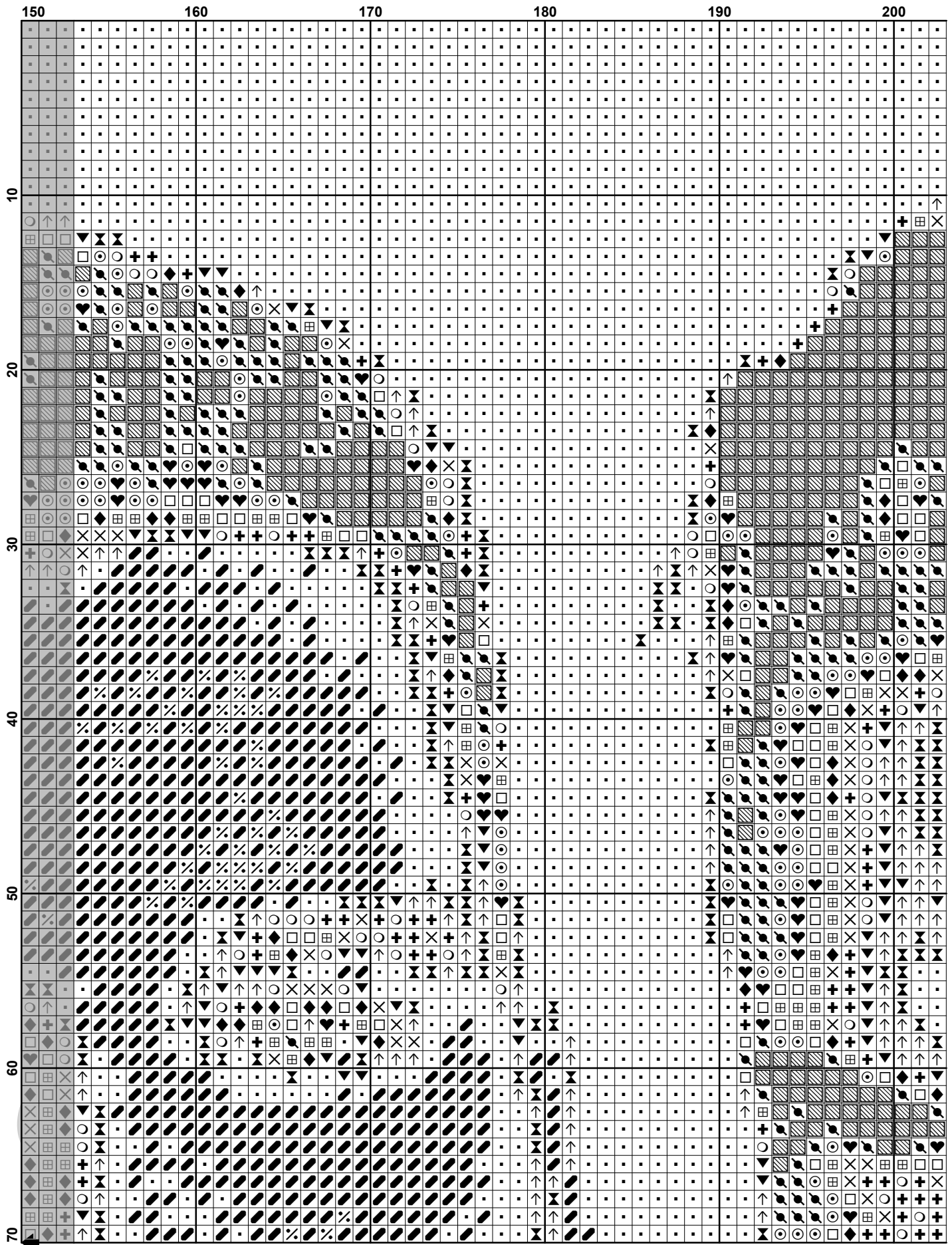
List - 1 (page)	List - 2 (page)	List - 3 (page)	List - 4 (page)	List - 5 (page)
List - 6 (page)	List - 7 (page)	List - 8 (page)	List - 9 (page)	List - 10 (page)
List - 11 (page)	List - 12 (page)	List - 13 (page)	List - 14 (page)	List - 15 (page)

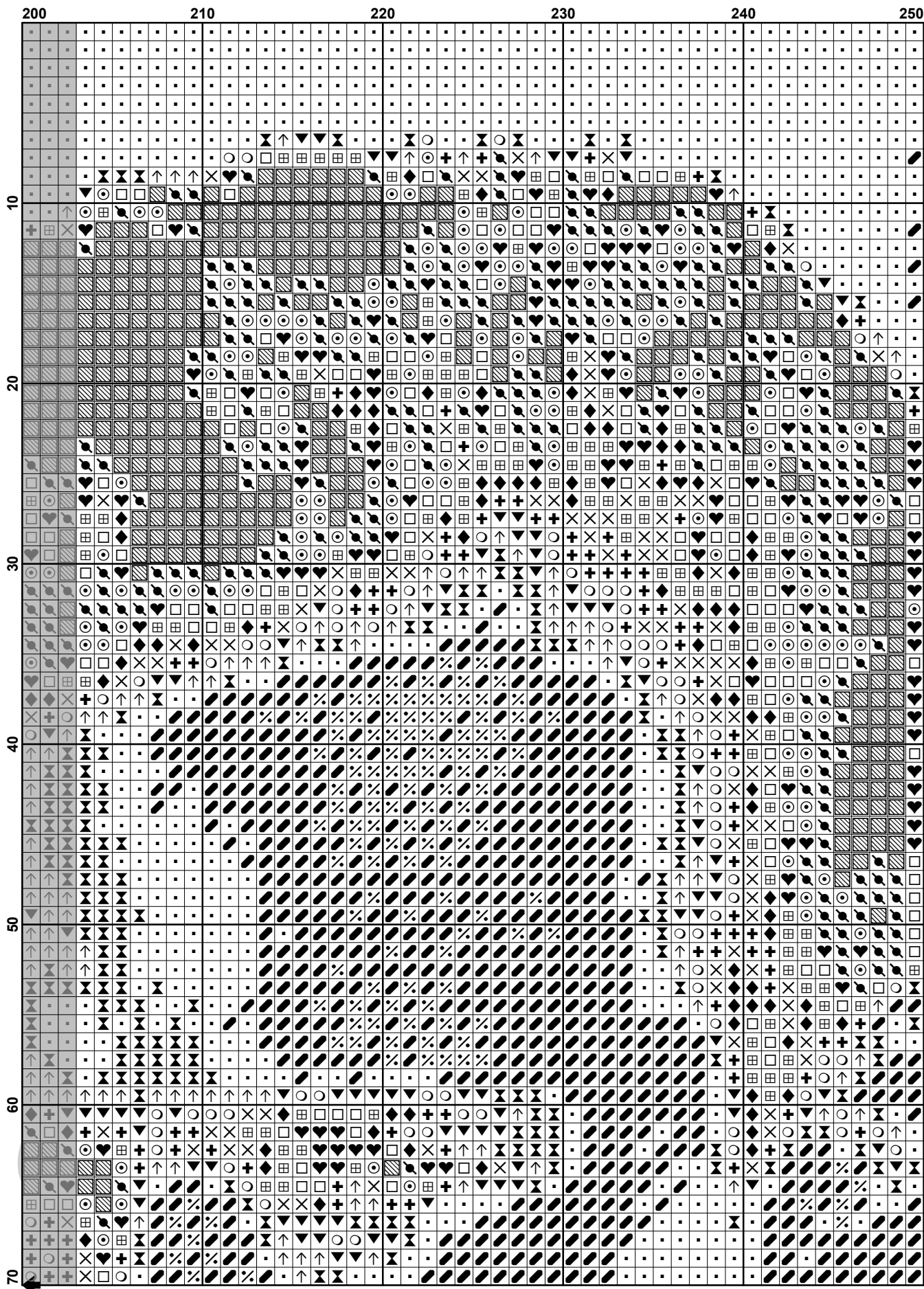
Potřeba bavlnek k předl.Depech.					
Číslo	Bavlnka	Počet křížků	Aida 14/2nitě	Aida 18/2nitě	Aida 16/2nitě
310	DMC	8774	6	5	5
317	DMC	1372	1	1	1
318	DMC	2308	2	2	2
3799	DMC	2082	2	2	2
3865	DMC	2005	2	2	2
413	DMC	1274	1	1	1
414	DMC	2071	2	2	2
415	DMC	3111	2	2	2
762	DMC	12008	8	7	7

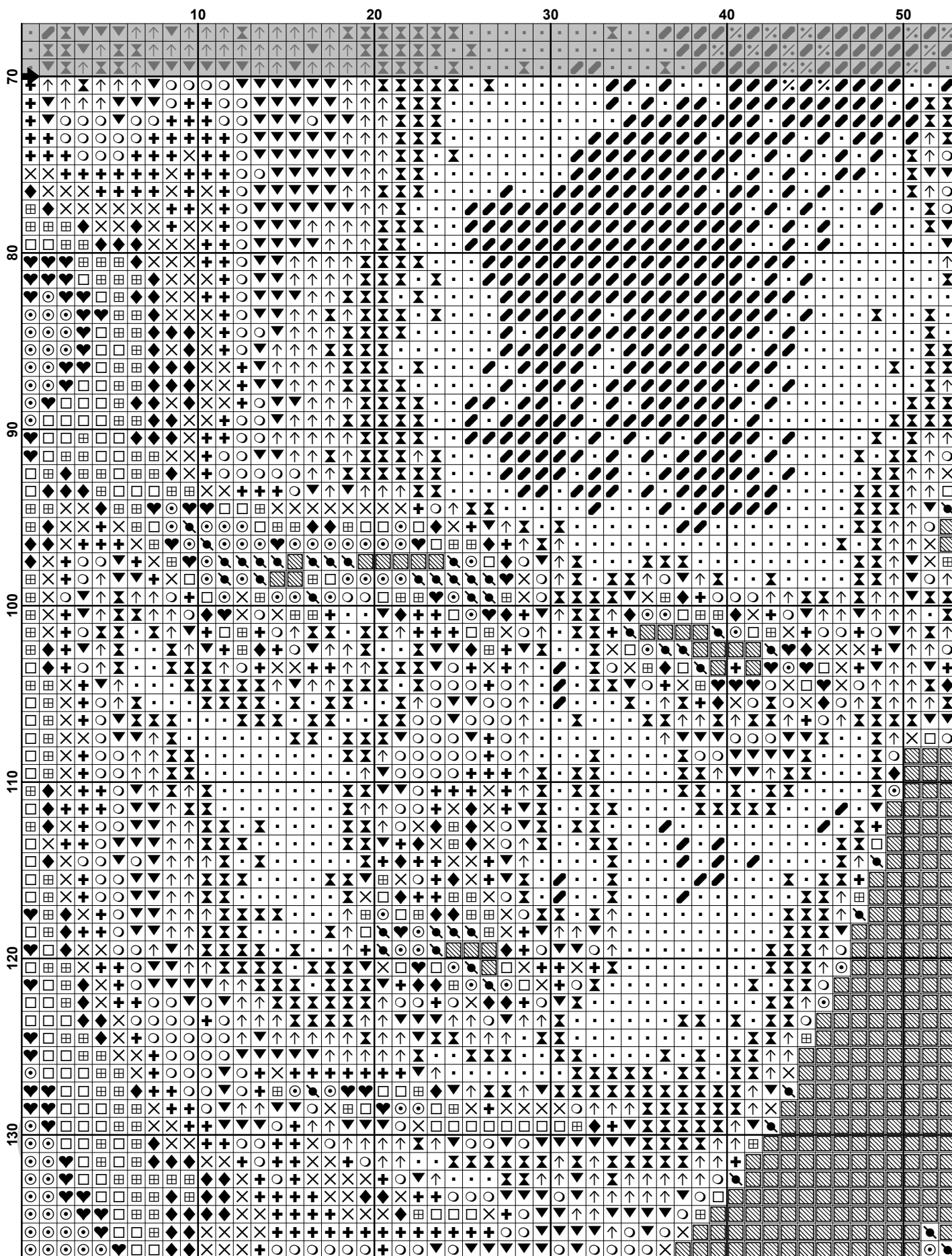


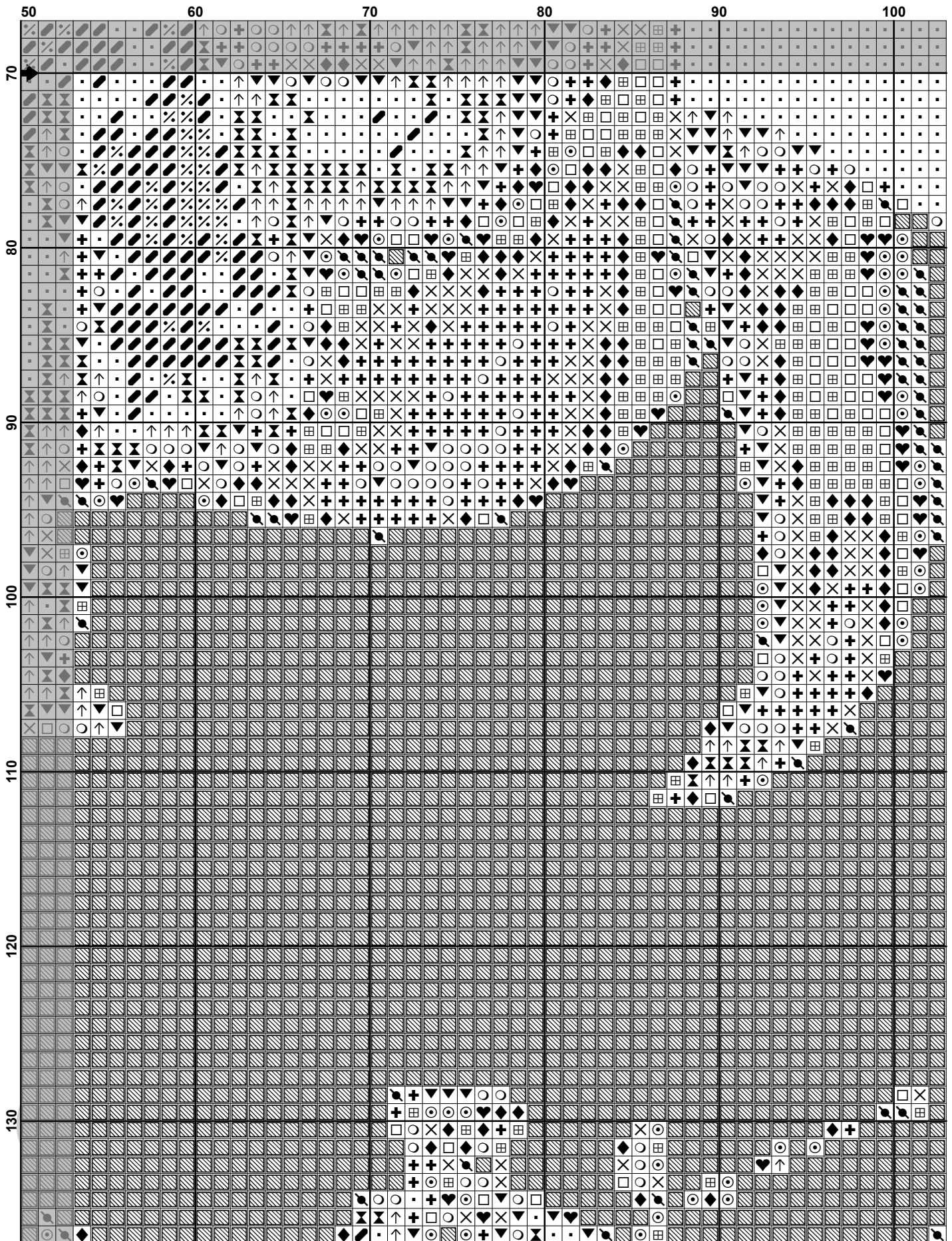


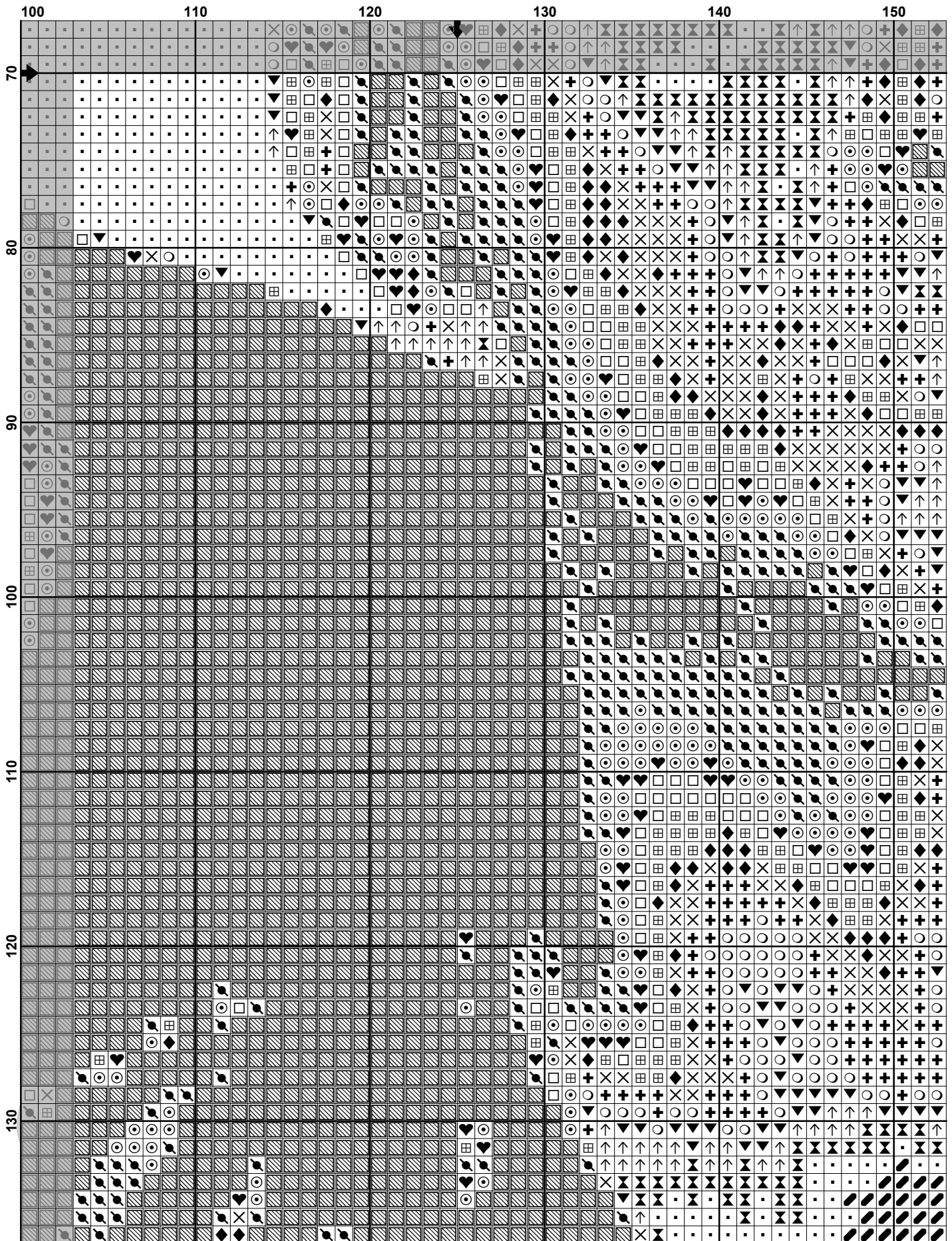


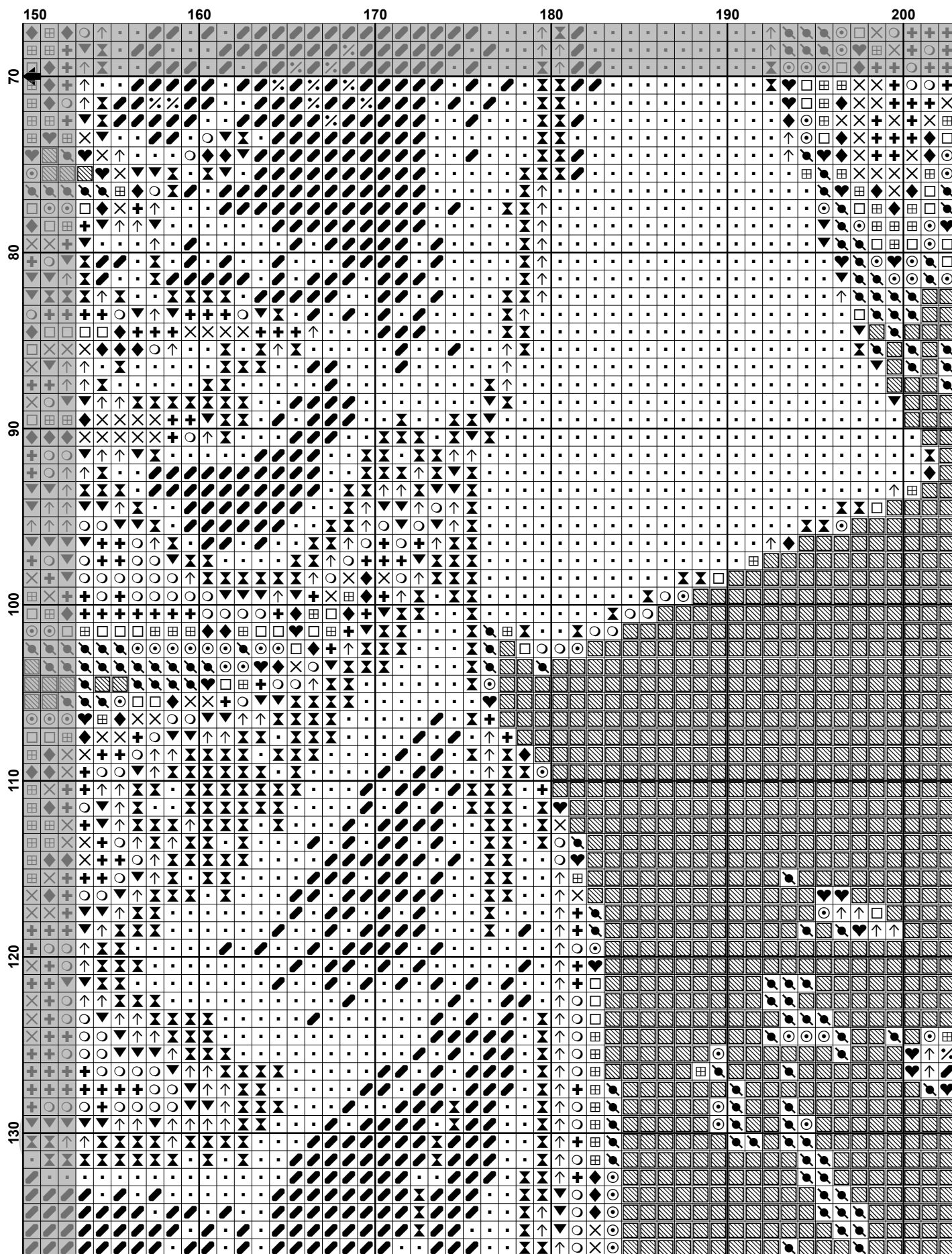


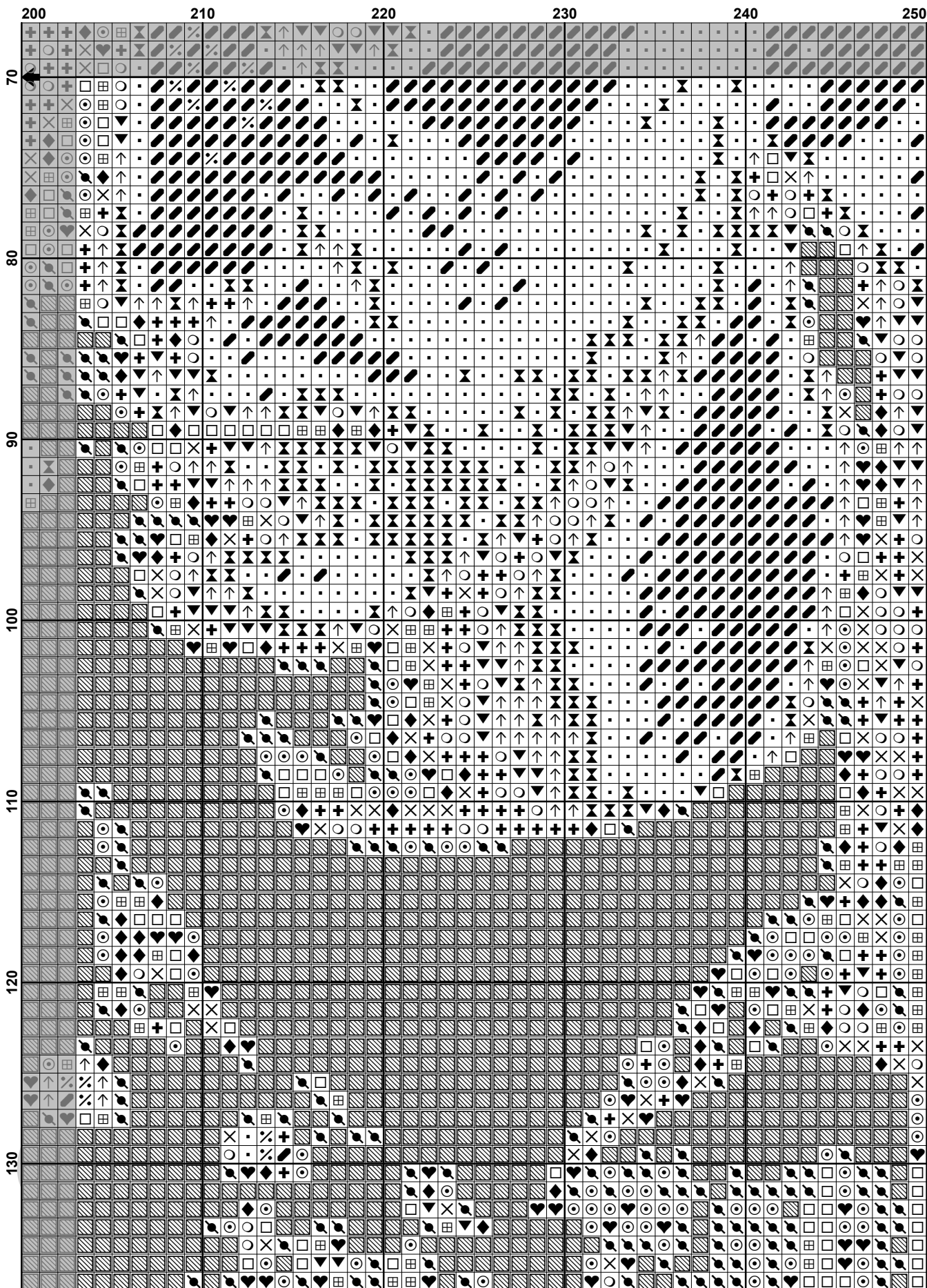


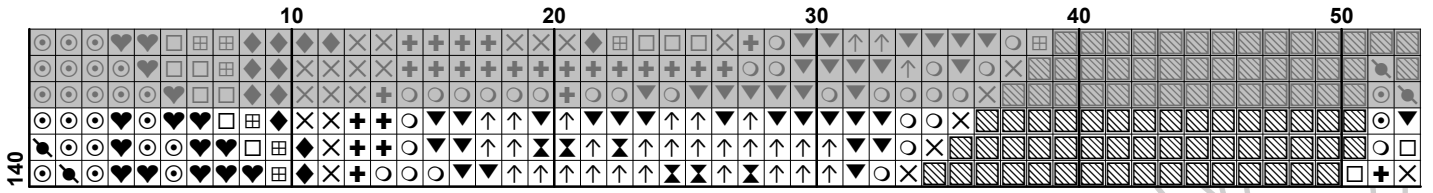




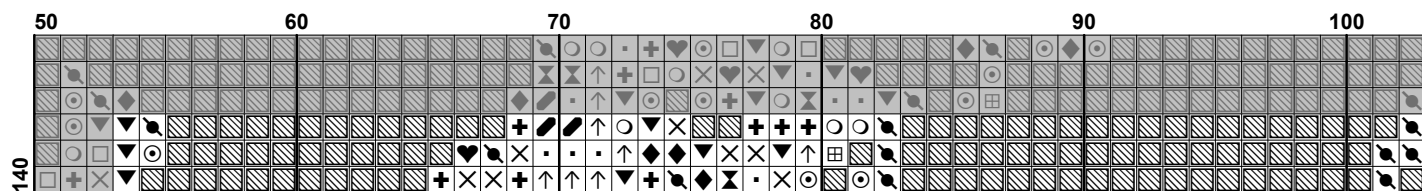




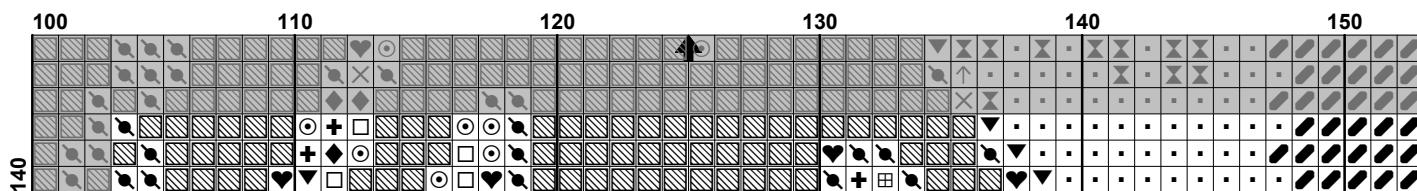




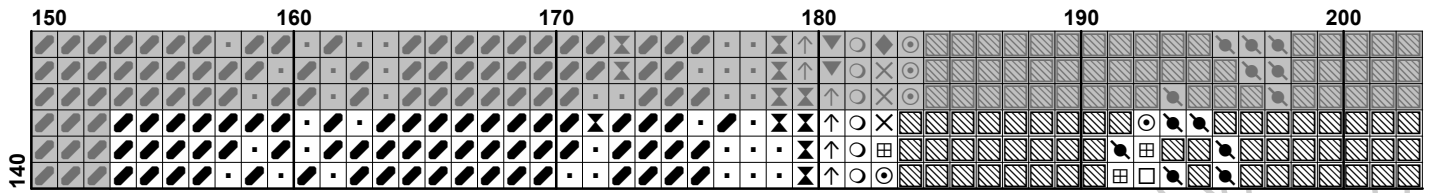
Sendy 2016



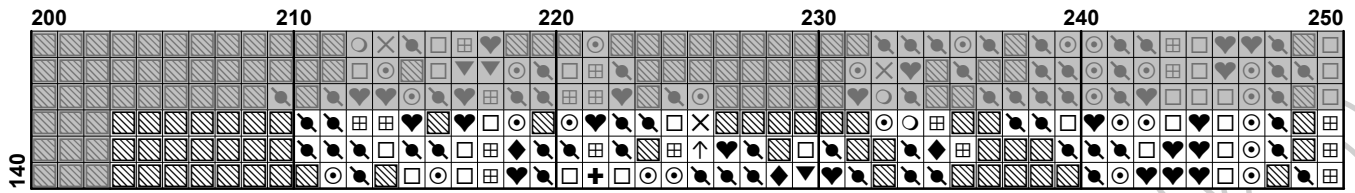
Sendy 2016



Sedy 2016



Sendy 2016


























Sendy 2016

Fabric: Aida 14, White

250w X 140h Stitches

Size: 14 Count, 45.36w X 25.40h cm**Floss Used for Full Stitches:**

Symbol	Strands	Type	Number	Color
	2	DMC	310	Black
	2	DMC	317	Pewter Gray
	2	DMC	318	Steel Gray-LT
	2	DMC	413	Pewter Gray-DK
	2	DMC	414	Steel Gray-DK
	2	DMC	415	Pearl Gray
	2	DMC	762	Pearl Gray-VY LT
	2	DMC	3799	Pewter Gray-VY DK
	2	DMC	3865	Winter White
	1	DMC	3865	Winter White
	1	DMC	762	Pearl Gray-VY LT
	1	DMC	762	Pearl Gray-VY LT
	1	DMC	415	Pearl Gray
	1	DMC	415	Pearl Gray
	1	DMC	318	Steel Gray-LT
	1	DMC	318	Steel Gray-LT
	1	DMC	414	Steel Gray-DK
	1	DMC	414	Steel Gray-DK
	1	DMC	317	Pewter Gray
	1	DMC	413	Pewter Gray-DK
	1	DMC	3799	Pewter Gray-VY DK
	1	DMC	3799	Pewter Gray-VY DK
	1	DMC	310	Black